



Medical Staff Welcome Pack

Gastroenterology - £76,761 – £103,490 plus £7k recruitment and retention (t&c dependent)

Thank you for your interest in the role

Thank you for your interest in Tameside & Glossop Integrated Care NHS Foundation Trust.

#TeamTameside is entering an exciting time. Our vision is to work collectively with our health & social care partners to improve health outcomes for the population of Tameside & Glossop.

We are flexible in supporting the career aims of our colleagues and as a Trust we are committed to offering as much support as possible to ambitious doctors who are looking for their next challenge. Because of this, we were in the top 20% of organisations in the Staff Survey for staff recommending us as a place to work.

I hope you find the following information pack useful. Please do not hesitate to contact the relevant Clinical Director to discuss this role further – their details will be on the advert.

More information on our Strategic Plan can be found on our website

<https://www.tamesidehospital.nhs.uk/Default.aspx?LocID-014new0a7.RefLocID-01403b001.Lang-EN.htm>

We look forward to hearing from you.

Mr Brendan Ryan
Medical Director



Mr Brendan Ryan
Medical Director

The Trust is nestled at the foot of the Pennines, eight miles to the east of Manchester and serves a population of 250,000

Manchester is a major city with a rich industrial heritage. Recognised for its architecture and culture, it is a hub of activity and diversity.

The breathtakingly beautiful Pennine Moors offer plenty of opportunity for outside enjoyment such as walking, cycling and horse-riding. There is a lively scene of pubs, restaurants and cafes.

The population served by the hospital is concentrated in the largely industrialised areas of the eight townships of Tameside, which comprise Tameside Metropolitan Borough Council.

This is in addition to Glossop, a market town within the Borough of High Peak in Derbyshire.

We are located within close proximity to the M60 motorway network and just half an hour away from Manchester Airport.

The Trust is also closely located to the town of Huddersfield and the city Leeds.

Information on local accommodation can be found here –

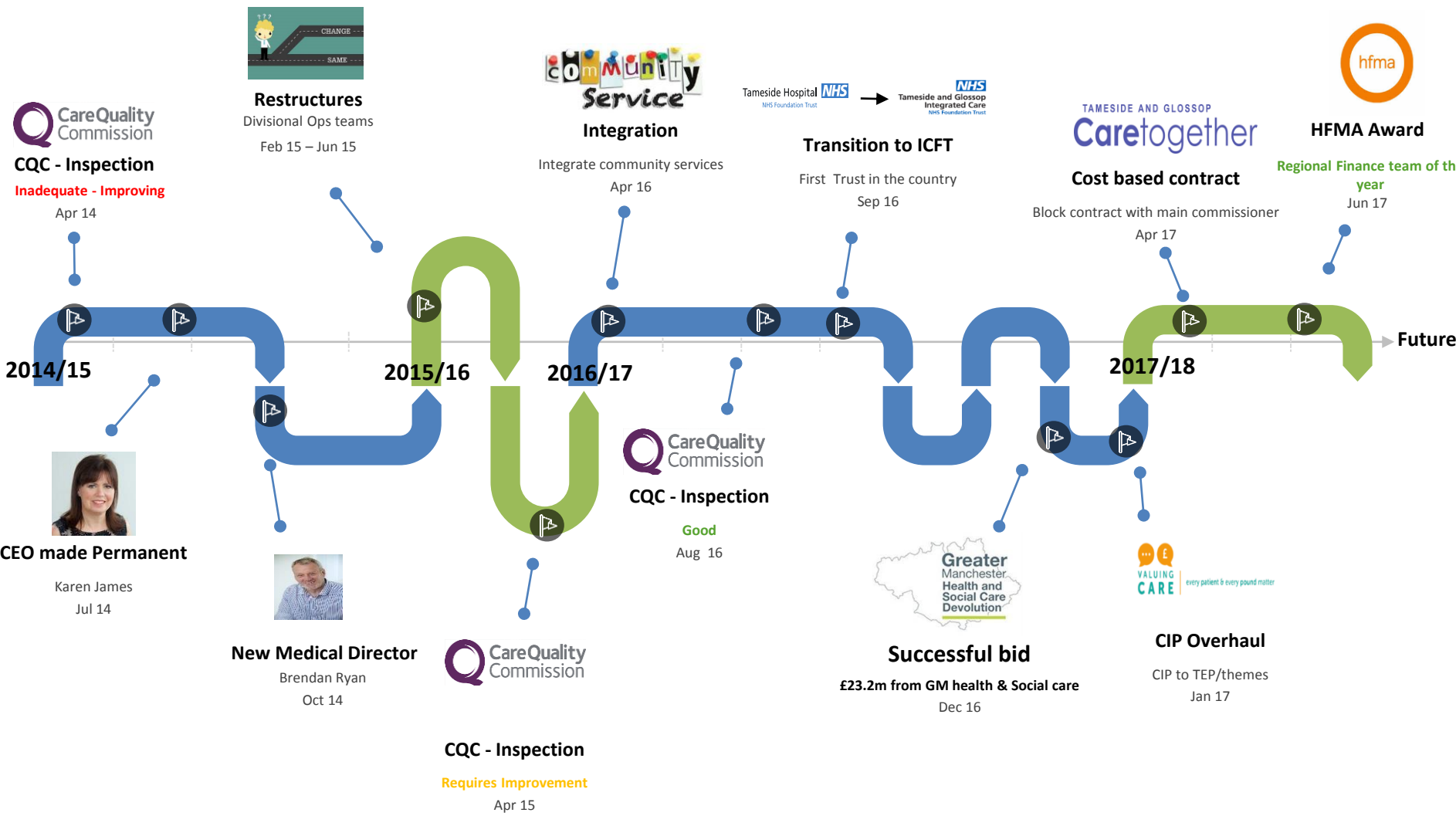
<http://www.rightmove.co.uk/property-to-rent/Tameside.html>

Information on local schools in the area can be found here -

<https://www.tameside.gov.uk/Education>



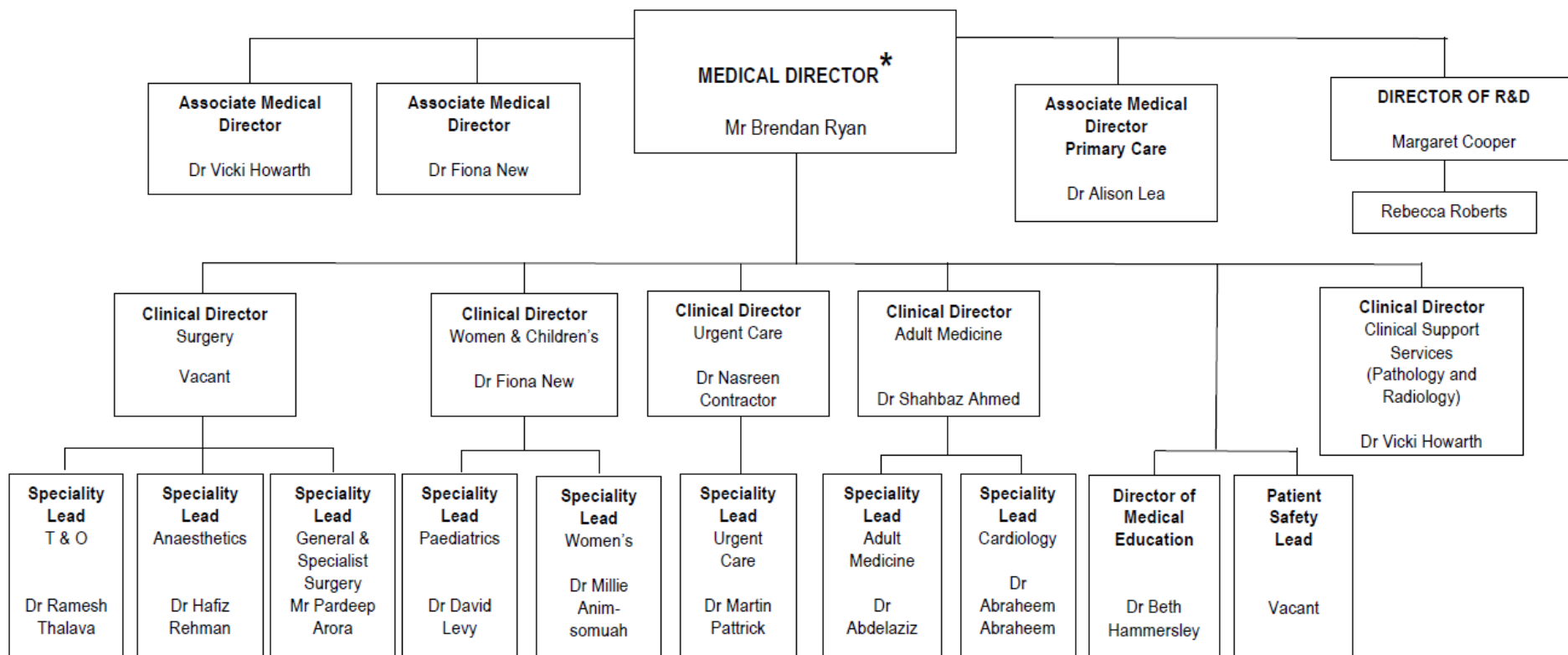
We are committed to improvement



The Division of Medicine, Clinical Support Services and Adult Community Services

MEDICAL DIRECTOR

* Professional Accountability for Clinical Directors and Lead Consultants, along with the Director of Medical Education & Patient Safety Leads



Our transformational journey to improve outcomes for patients through a series of projects.

Together with Tameside and Glossop Council and the Tameside and Glossop Clinical Commissioning Group, the Trust is launching a number of improvement schemes known as Care Together. Each of the schemes will contribute to improving health and wellbeing for the population of Tameside and Glossop.

We are transforming services to better support people in their own homes, reducing the likelihood of hospital attendance and admissions, and to ensure that people are as well supported as possible to live healthy and independent lives.

To deliver this, a number of neighbourhood teams across the area have been established. Our 5 year plan is to work collaboratively with our health & care partners to improve health outcomes. Our overall aims are summarised as:

- Right support - keep people safe and prevent, reduce or delay the need for long term help
- With the right partners - work effectively with individuals, friends and family and in partnership with other organisations to achieve joined up and cost effective support
- In the right place - at home, in the community or in a specialist setting, according to need and what is most cost effective
- At the right time – to prevent conditions getting worse, increase resilience and maximise independence

- Giving people better knowledge and control of their own health needs
- Develop a workforce which is fit for the future and who demonstrate our Values & Behaviours.
- Contribute to the delivery of financial sustainability through transformation & innovation.
- We are rated as 'better than average' or above in 29 categories out of 32 of the national NHS staff satisfaction survey
- We are in the top ten of all trusts in terms of openness, transparency and learning from mistakes, being rated as 'good'
- Our operational performance is very strong. We routinely meet our cancer targets, diagnostics waits times and 18 week RTT standards.
- 98% of our patients would recommend us to their Family and Friends
- We have been shortlisted and won awards nationally



FROM PATIENT CARE TO POPULATION HEALTH



OUR VISION

To improve health outcomes for our population and influence wider determinants of health, through collaboration with our health and care partners.



AIMS

POPULATION HEALTH

- Tackle causes of ill-health
- Support lifestyle/ health changes
- Grow our partnerships with community

HIGH QUALITY SERVICES

- Continue to improve quality
- Integrate health & care services
- Care closer to home
- Embracing technology

WORKFORCE

- Rewarded talent
- Develop workforce for the future
- Living the values and behaviours

SUSTAINABILITY

- Innovation
- Integration of services
- Effective use of resources
- Develop partnership working

THE CHALLENGE

TRANSFORMING PICTURE IN GREATER MANCHESTER (GM)

- Focus on population health prevention
- Developing Local Care Organisations
- Standardising acute and specialist care across Greater Manchester

LOCAL CARE NEEDS

Local population have poorer health outcomes than GM and national averages

Tameside ranked

142
150
for premature deaths for heart disease

FINANCE

Trust deficit of £25.3m in 2017/ 2018

£70m
funding gap for Tameside & Glossop if we don't transform

OUR PLANS

STRATEGIC CHANGE

- Moving from hospital based care to providing hospital, community and health & wellbeing care
- Work with our communities to develop person centred care and support

SERVICE TRANSFORMATION

- Encouraging and helping people to look after their health and well being
- Provide high quality care in your neighbourhood
- Maintain local hospital services and where required work with partners to deliver specialist treatment

INNOVATION

- Innovative use of emerging technologies
- Learning organisation focused on continued improvement
- Use up to date technology to deliver high quality care

OUTCOMES

BRINGING LIFE EXPECTANCY UPTO THE NATIONAL AVERAGE* BY 2025

82.8 YRS
79 YRS

INTEGRATED SERVICES THAT DELIVER HIGH QUALITY CARE

TAMESIDE & GLOSSOP INTEGRATED CARE NHS FOUNDATION TRUST FINANCIALLY & CLINICALLY SUSTAINABLE

Why work in Gastroenterology at Tameside and Glossop ICFT?

Our Achievements

JAG

Joint Advisory Group
on GI Endoscopy

JAG accredited
Endoscopy suite

Hospital Alcohol
Liaison Service



Specialist Trained
Nurses

Gastroenterology

Team of Supportive Medics



30 Bed Ward



Our Achievements

2018 HSJ Shortlist

First British hospital to
ban all sugary snacks
from canteen and
vending machine

4 Gold awards for Year 4
Teaching Excellence of
undergraduate medical
students

2017 UNICEF Baby
Friendly Award

91.8% of Cancer patients
begin treatment within
62 days of GP referral

Recognition for our
commitment to MRCP exams

National Staff Survey - top 20%
for 25 out of the 32 categories

Ranked in top 29 across all
three main key
performance indicators out
of 129 trusts in England



Achievements

We welcome feedback.

"From the minute you arrive all the staff are lovely, friendly and extremely helpful."

(Endoscopy Unit Patient Feedback)

"Staff of all grades were committed to the continuous improvement regarding the quality of care and treatment delivered to patients."

(CQC Report)

#TEAMTAMESIDE

"The staff were brilliant and nothing was too much, lovely bunch of people. Thank You "

(Gastroenterology Patient Feedback)

"Forward thinking "

(Steve Brine, Public Health Minister)



The trust is large enough to provide you with the support and development you need but small enough to treat you as an individual

Teaching and Training Opportunities

the trust is affiliated with the University of Manchester



Health and Well Being

Multitudes of health and well being opportunities



Tier 2 visa support

certify maintenance for you and your family and refund any premium service fees you pay out. Single accommodation while you look for more permanent accommodation.

Recruitment and Retention

Premium applicable to certain specialities (T&C's apply)



Personal Development Opportunities

Support with paid study leave including CESA applications



Electronic annual leave system

Book leave from home or off site and have electronic notification.

What can we offer

On Site Educational Support

State of the art postgraduate medical centre on site with lecture rooms and staffed library

We look forward to hearing from you.

Live and Breathe our
Trust Values



Willingness to develop
yourself and others so that
together we can make a
difference.

Team Player



Passionate about improving how
we provide care to the patients of
Tameside and Glossop.



Tameside & Glossop Localities

- Ashton
- Denton, Droydsden, Audenshaw
- Hyde, Hollingsworth, Longdendale
- Stalybridge, Dukinfield, Mossley
- Glossop

You

TAMESIDE AND GLOSSOP
Caretogether

Working with our partners in
the health economy to
achieve better outcomes for
our patients.

Have a “Can Do”
attitude and willing
to go “Above and
Beyond”.

