

Job Description

Job Title:	Advance Practitioner – Nuclear Medicine
Job Band:	7
Department:	Nuclear Medicine
Responsible to:	Modality Lead

Why Join The Dudley Group?

Here at the Dudley Group our patients and staff are at the heart of all that we do to offer a high-quality patient experience in a caring and supportive environment that aligns with our vision of providing excellent health care, improved health for all.



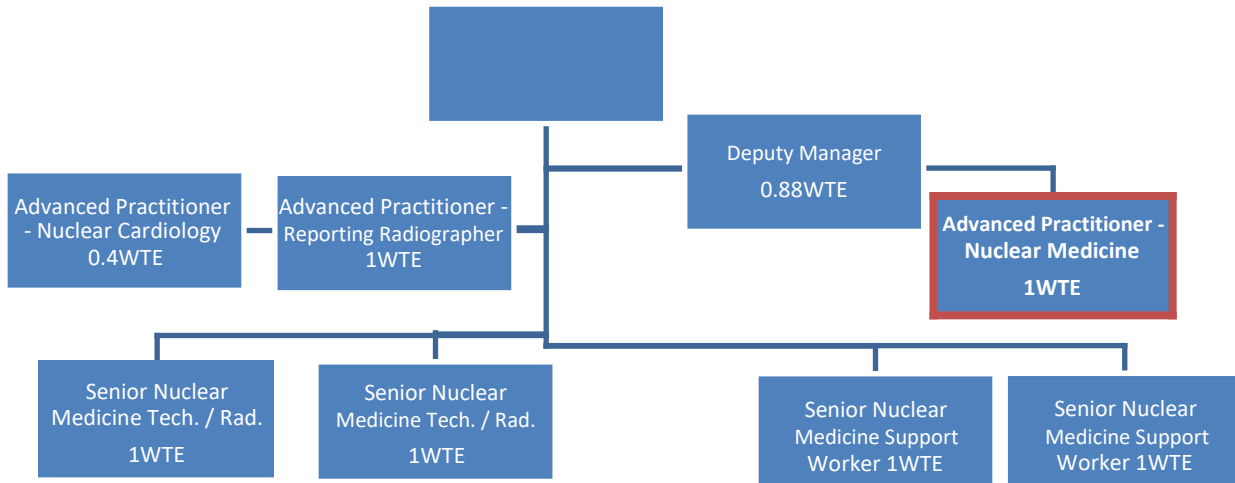
Job Summary

The post holder will act as a core team member in the delivery of high quality nuclear medicine but also contribute to the overall direction and development of the service. They will participate in one or more of the following area's

- Lead cardiac stress sessions and provide expert advice on nuclear cardiology.
- Report nuclear medicine studies without CT autonomously, and SPECT/CT scans in collaboration with ARSAC holder.

They will ensure a consistent and reliable diagnostic service is provided to our patients on a day to day basis. Skill and expertise will be required as a high level of autonomy will be expected, especially in area's of radiation safety and legislation governing medical exposure.

Structure Chart



Principal Duties & Responsibilities

To provide professional, high quality and responsive specialist diagnostic treatment within the Nuclear Medicine service to patients in a safe clinical environment. The post holder will practise without the direct supervision of a clinician and will ensure that procedures are carried out according to trust policy, department procedures, current UK radiological protection and other health and safety legislation.

To contribute to clinical leadership in Nuclear Medicine, participating in undergraduate and postgraduate training, supervising, motivating and developing other staff as appropriate. To show advanced practice and responsibility for cardiac stressing as an extended advanced role within the nuclear medicine department.

To provide senior oversight in your specified modality, performing high quality diagnostic examinations and independently clinically evaluating the information gained, recording relevant images and issuing a written report of the examination findings.

To operate effectively as a specialist in Nuclear Medicine, participating in the day to day planning of Nuclear Medicine delivery and deputising for the Modality lead as required.

Participate in the cardiac stress testing rota by leading sessions using pharmacological stressing agents such as Adenosine. Have in depth knowledge of potential drug interactions and adverse events possible in connection with the procedure. Maintain ILS level resuscitation training.

To support the delivery of a high quality, safe and compassionate healthcare service, to act as a role model to others in all aspects of their work. Give highly specialised advice to other radiographic staff about the clinical management of patients undergoing Nuclear Medicine imaging.

To have developed a highly experienced specialist knowledge and completed a postgraduate course within the specialist area of nuclear medicine at a masters level. Maintain and continuously improve specialist knowledge in Nuclear Medicine which significantly contributes to the Trust's stated objectives & aims, applying this knowledge to the benefit of the service.

Conduct examinations across all nuclear medicine procedures including the more specialised procedures such as hybrid imaging. Able to scan a range of patient types, both as an autonomous practitioner (within the limits of the ARSAC regulations) and as part of a multi professional team.



To undertake management tasks as delegated by the Modality lead and to deputise in their absence. To assist and help manage and be responsible for the provision and development of staff and resources within the designated Nuclear Medicine department. To arrange and organise departmental workloads taking into consideration staffing levels, experience, waiting times and patient treatment targets. To take responsibility for the drawing up, assay and administration of radiopharmaceuticals to patients and appropriate recording of activities. The post holder will need to be aware of the following:

- Legislation concerning administration of radioactive substances.
- Possible adverse reactions to radiopharmaceuticals or non-active compounds associated with NM procedures. To be aware of possible adverse drug reactions and act appropriately during such an occurrence.
- Patient's medical condition and fitness prior to the procedure to ensure that clinical objectives of the procedure will be met.
- Legal requirements for consent to a medical procedure.
- Procedures for safe disposal of radioactive waste.

To perform quality control measurements on items of equipment as directed by the medical physics expert (MPE) by using standard written protocols. The post holder will carry the responsibility to ensure that the gamma cameras are working within specification and that full QC is carried out within the specified time intervals.

To report deficiencies in performance of gamma cameras or other equipment to the head of department and/or clinical scientists.

To process images using the Nuclear Medicine image processing computer. Responsibilities will include:

- Use of commercial and in house software for both quantitative and qualitative manipulation of gamma camera images.
- Awareness of artefacts and other "pit falls" which may lead to processing errors.
- Awareness of the limitations of the image processing system with respect to original image quality or counting statistics.

To provide a safe environment for staff, patients and visitors, complying with current legislation relating to all aspects of health and safety and radiation safety regulations, reporting any untoward incidents and undertaking risk assessments where



appropriate. To assess patients, relatives and other staffs suitability to enter the radiation controlled area, using both verbal and written communication, ensuring compliance with the safety regulations.

To ensure that monitoring for radioactive contamination of the work area is carried out according to department procedures and any contamination is removed where possible.

To carry out monitoring of radioactive waste and ensure correct disposal as specified in the radioactive waste procedure for the department. The post holder is also responsible for regular checking of cumulative waste totals to ensure authorised limits are not likely to be exceeded within the year.

To liaise with radiopharmacy staff regarding daily provision of radiopharmaceuticals and for any non-active pharmaceuticals that may be prescribed for patients by the Consultant Radiologist. This requires broad knowledge of the pharmacy production system, costs of raw materials and radiopharmaceuticals, so that costs may be optimised.

To ensure correct quantities of radiopharmaceuticals and non -active pharmaceuticals will be available to meet patient appointment schedules and place orders when required, bearing in mind the radiopharmaceutical budget limitations. This also involves cancelling standing order deliveries if stock levels become too high.

To write department protocol and advise Radiologists and the Head of Department on appropriate modifications to such protocols to improved efficiency or quality based on practical experience with the procedure. To update and research best practise producing protocols for different examinations.

Allocate appointments to Nuclear Medicine referred patients in accordance with department protocols and requirements specified by the practitioner. This will involve organising ward admissions, modification of patient's medication, ordering of specific radiopharmaceuticals if necessary and ensuring specific staff availability or specific equipment is available.

To take part in Continuous Professional Development system (CPD) and maintain an up to date portfolio of training and experience to demonstrate this.

Report all incidents or accidents involving patients, visitors or staff and, complete accurate statements and reports.



To adhere to all Trust policies including the Health and Safety Regulations; COSHH Regulations; the Data Protection Act and Hospital and Directorate Clinical Governance Strategy.

Lead by example, maintaining Advanced Practice in clinical expertise, promoting high imaging standards and appropriate use of radioactive substances within the Nuclear Medicine Departments.

There may also be a requirement to undertake other similar duties as part of this post in order to provide a quality service. These will be consistent with the level of responsibilities outlined above.

This job description may be reviewed from time to time in light of developments and may be amended in consultation with the post holder.

Organisational Values

The post holder will:

Care: You will listen, be respectful and treat others with compassion and kindness.

Respect: You will behave with respect to everyone you meet and encourage an inclusive culture where we respect the contribution everyone makes.

Responsibility: You will take responsibility for yourself and your team.

There may also be a requirement to undertake other similar duties as part of this post to provide a quality service. These will be consistent with the level of responsibilities outlined above.

This job description may be reviewed from time to time considering developments and may be amended in consultation with the post holder.

Location

The Trust provides services from different sites. You may be expected to work at any of the Trust locations. These include Russells Hall Hospital, Dudley Guest Hospital and Corbett Hospital as well as various community-based sites across the borough.

Code of Conduct

It is expected that all staff would be able to show that they live our trust values in their work and that they will deliver the essential behaviours in their role.



Staff are expected to adhere to Trust policies and procedures which establish standards of good practice as well as follow any codes of conduct which are relevant to their own profession.

Equality, Diversity, and Inclusion

All Trust staff have a responsibility to embrace the diverse cultures of both our staff and the communities that we serve, and as such, all staff should ensure that equality, diversity, and inclusion are embedded in their work philosophy and reflected in their behaviour. Equality, Diversity, and inclusion are pivotal to the values and vision of the Dudley Group so that they shape everything that you do every single day.

Safeguarding Children and Adults

All Trust staff have a responsibility to ensure the safeguarding of children, young people, and vulnerable adults. This includes attending statutory and mandatory training, adhering to local Safeguarding Children and Adults policies and procedures and inter-agency guidance as showed in the Trust's Safeguarding policies and procedures.

Improvement Practice

The trust has a long-term commitment to its continuous quality improvement programme; "Dudley Improvement Practice." As part of your role, you will be asked to take part in improvement activity relevant to your post.

No Smoking

The Trust is a completely Smoke Free Organisation and all premises will be considered No Smoking Zones.

Health and Safety

The Trust has a duty of care to employees and will ensure that, as far as is practical, adequate training, facilities and arrangements for risk avoidance are in place.

It is the individual employee's responsibility, however, to manage their own health and wellbeing.

All Trust employees must follow relevant Health and Safety legislation and the Trust's policies relating to Health & Safety and Risk Management.

Prepared by:	Modality Lead
Date:	01/06/2022



Job evaluation completed:	N/A
Job evaluation reference number:	N/A



CARE

A CARING, KIND AND COMPASSIONATE PLACE: We will support people to have joy in work and to treat each other with compassion and kindness.



RESPECT

A PLACE WHERE COLLEAGUES RESPECT ONE ANOTHER: We will behave with respect towards everyone we meet to encourage an inclusive culture where we all believe in and live by our Trust values.



RESPONSIBILITY

A WORKFORCE FOR NOW AND THE FUTURE: Making Dudley the place people want to be and stay because everyone has a role to play and takes responsibility for themselves and their teams.