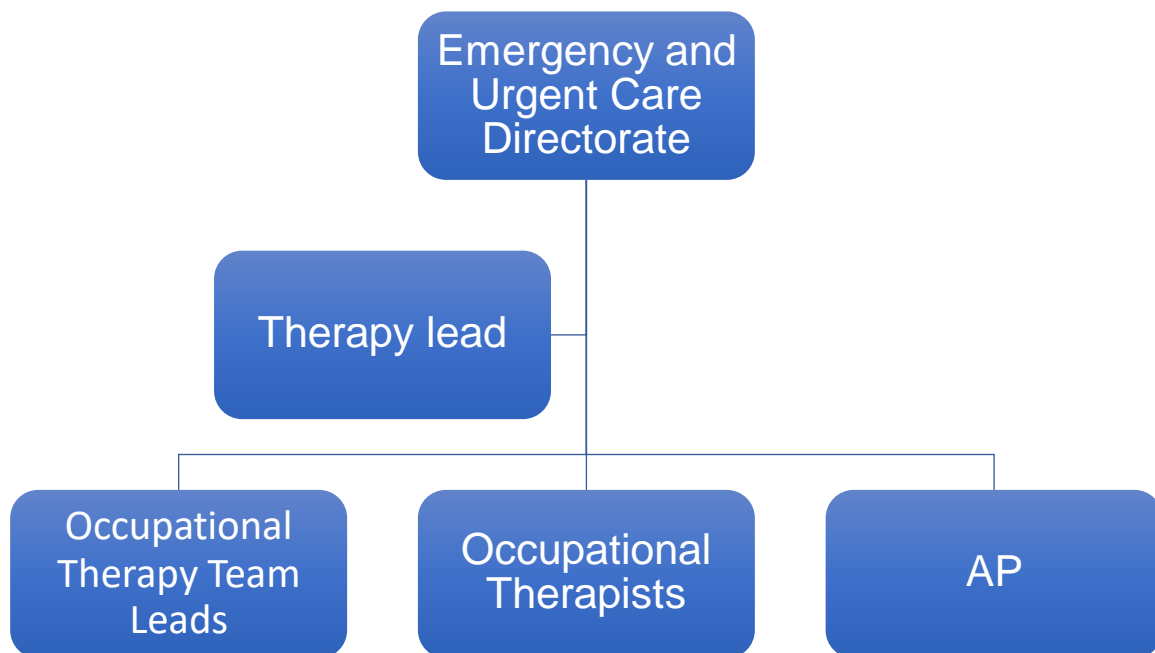


JOB DESCRIPTION

Job title	Rotational Occupational Therapist
Band	B6 Full Time
Department	Occupational Therapy

Insert title of directorate, e.g. People directorate



Job overview

An exciting opportunity has arisen to join a proactive, enthusiastic and well-respected team in a busy acute hospital.

The post holder will be providing rapid assessments, discharge planning and admission avoidance mainly within the acute hospital wards and emergency department at Torbay Hospital.

We are looking for a full time, highly skilled and motivated therapist to join us in the future development of this service, and in return, we provide excellent opportunities for CPD, peer support and supervision.

Main duties of the job

To provide a 7-day service to patients needing specialist assessment and treatment in order to facilitate a safe and timely discharge or avoid admission to hospital.

Under supervision of the Clinical Team Lead O.T. to be responsible for the continued development of the O.T. service provided by the Therapies Directorate to the Medical/Emergency Service Division.

About your new team and department

We are a small and friendly team of Occupational Therapists who are integrated within a wider team of Physiotherapists in the acute setting at Torbay Hospital. We have excellent leadership and support from our senior members of the team to include a newly appointed Head of Occupational Therapy Services/Principle Occupational Therapist, together with an Inpatient Therapy Manager. We strongly believe in a 'What matters to me' approach and are patient centred. We have a high profile and are well respected with our MDT colleagues. We value new ideas that would enhance our OT and Trust service.

Detailed job description and responsibilities

Communication and working relationships

- Communicate sensitive information to patients' relatives and carers regarding the implementation of individualised treatment programs, loss of independence and unfavourable outcomes of assessments e.g. the inability to return home from hospital. Negotiate unwelcome changes in lifestyle with patients and carers
- Choosing appropriate communication strategies in order to communicate with patients suffering with conditions involving barriers to understand e.g. patients suffering with stroke, dementia and cognitive impairments
- Ensure effective communication with all members of the multi-disciplinary team, Consultants, Ward Managers, Nursing Staff, Speech and Language Therapists, Physiotherapists and community-based colleagues in Health and Social Carer and voluntary agencies
- To liaise closely with the bed management team to facilitate effective use of hospital beds.

Analytical and judgement

- To provide clinical assessment and treatment for patients identified as having therapy needs, within Medical/Surgical/Emergency Services
- To explore innovative new ways of delivering acute patient services to facilitate speedier discharges from Hospital and participate in implementing and evaluating changes to the service
- To plan, implement and evaluate treatment programs for patients with a wide variety of medical conditions in liaison with multi-disciplinary teams, families, carers and other agencies
- To assess and make recommendations regarding care packages, equipment provision and ongoing treatment of patients with multiple needs to prevent hospital admission or facilitate discharge
- To complete specialised assessments to include cognitive, sensory and perceptual assessments wheelchair prescription and pressure-relieving equipment.

Planning and organisation

- To manage own clinical caseload and other competing demands of job role, prioritising your own work and that of those you supervise
- To work without direct supervision in a variety of situations e.g. at weekends, bank holidays or on home assessment visits

Responsibility for patient and client care

- To be familiar with and adhere to Trust Health and Safety Policies and procedures, contributing to a safe working environment for staff and patients
- To ensure a high level of clinical knowledge in the treatment of all medical/surgical/oncology and orthopaedic conditions

Policy and service responsibility

- To be familiar with Trust Policies and any Legislation specific to the role such as the Mental Capacity Act 2005.

Responsibility for finance, equipment and other resources

- To ensure that any equipment issued to patients is based on assessment and clinical reasoning.
- To ensure that all equipment is in appropriate working order and if not an understanding of who to report it to.
- To ensure effective use of resources and only use appropriately.
- To be able to adopt a 'strength based approach'.

Responsibility for supervision, leadership and management

- To ensure that the framework for clinical supervision as expressed in the Trust Policy is embedded and supported through the clinical area in which you work
- In addition, the member of staff has a responsibility to access supervision at an appropriate level for their own practice
- To provide supervision of junior staff/support staff when appropriate including yearly appraisal and ensuring their continued professional development
- To participate in own supervision and ensure own CPD
- Participate in the recruitment and selection of staff as required by the Clinical Team Lead Occupational Therapist
- To undertake the education and supervision of Occupational Therapy students on clinical practice placements as required
- To participate in provision of in-service training for staff as required

Information technology and administrative duties

- Maintain a high standard of documentation, records and audit information as required for clinical governance purposes
- To maintain accurate up-to-date records including computer generated statistical information to produce patient related reports
- Ordering equipment

Responsibility for research and development

- To explore innovative new ways of delivering acute patient services to facilitate speedier discharges from Hospital and participate in implementing and evaluating changes to the service
- To contribute to service wide developments as directed by the Clinical Team Lead Occupational Therapist
- Participate in clinical audit/research as directed by Line Manager
- Participate in pilot/project schemes as directed by the Clinical Team Lead

Responsibility and accountability

- To be aware of your actions and be familiar with Trust Policies and your governing body's Code of Conduct and Practice.
-

