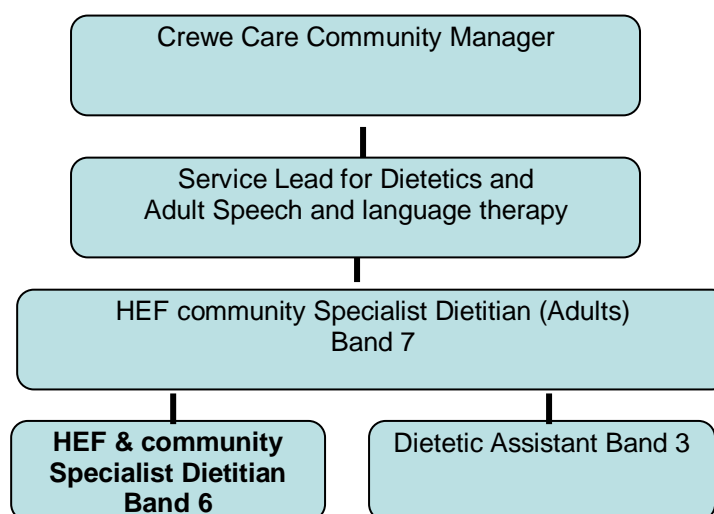


JOB DESCRIPTION

JOB TITLE	HOME ENTERAL FEEDING & COMMUNITY DIETITIAN
PAY BAND	BAND 6
DIVISION	CCICP
DEPARTMENT	NUTRITION & DIETETICS
LOCATION/BASE	LEIGHTON HOSPITAL
RESPONSIBLE FOR	COMMUNITY DIETETIC ASSISTANT
ACCOUNTABLE TO	COMMUNITY TEAM LEADER

Organisational Chart



In September 2016 Central Cheshire Integrated Care Partnership (CCICP) came into being as an innovative health partnership between Mid Cheshire Hospitals NHS Foundation Trust, Cheshire and Wirral Partnership and South Cheshire and Vale Royal GP Alliance, contracted to provide community health services for people across South Cheshire and Vale Royal. The aim of the partnership is to transform, develop and deliver services located within the community. This is a partnership which demands we recruit original thinkers committed to providing high quality, safe care in the right place at the right time.

JOB PURPOSE

1. To deliver specialist dietetic services to adults requiring enteral feeding, prescribing support or therapeutic dietary intervention across South Cheshire and Vale Royal, as part of the Home Enteral Feeding Team. To provide regular home visits, virtual clinics and
2. To formulate, deliver and monitor nutritional care plans for patients. This would include highly complex clinical conditions and diet therapy, within the community setting including in patient's own homes and continuing care establishments.
3. To be recognised as an expert source of knowledge in the field of enteral tube feeding and Oral Nutritional Supplements (ONS) contributing to development of clinical guidelines, resources and education packages.

CLINICAL

1. To practice safely within the professional code of conduct and level of competency for all aspects of work, including the management of patients in your care.
2. To contribute to the delivery of the dietetic service to the adult community patients including therapeutic diets, malnutrition and enteral feeding which requires specialised nutritional knowledge of enteral products alongside tube care, PEG site management and transitional feeding. Managing and prioritising a defined patient caseload within the community setting.
3. To promote the role of the dietitian within the multidisciplinary team and develop competency to undertake associated procedures with full consultation with community team leader such as replacement of balloon retained gastrostomy tubes
4. To work closely with speech and language therapists to assess community patients, prior to referral for PEG placement, against MCHFT criteria and directly refer to the consultant physician as appropriate.
5. To work closely with MMT on cost effective prescribing in the community
6. To gain acceptance for treatment and motivate/persuade patients/carers to comply with specialised dietary intervention where there may also be barriers to understanding such as cognitive impairment, hearing or sight impairment.
7. To utilise advanced communication skills to ensure clinical advice is delivered sensitively and at an appropriate pace taking into account clinical conditions such as terminal illness, degenerative diseases and considering the needs of carers.
8. To assess nutritional status taking into account anthropometric data, clinical conditions/treatment, biochemical data and social and cultural factors.
9. To estimate the patient's current nutritional intake and nutritional requirements using recognised validated techniques where available.
10. To collect all relevant information such as diet history, drug history and medical history in order to formulate specialised nutritional care plans/feeding regimes and deliver personalised verbal and written information.
11. To monitor and review nutritional care plans against outcome measures and adjust care plans to facilitate achievement of goals.
12. To arrange review of the existing caseload at an appropriate frequency to meet service guidelines.
13. To adapt highly specialised dietary information and liaise with the community multidisciplinary team to enable implementation of individual patient nutritional care plans considering speech therapy advice during transitional feeding from tube feed to modified textures.
14. To contribute to case conferences providing expert knowledge and explanation of highly complex nutritional care plans.

15. To accurately record all assessments and interventions electronically on EMIS using dietetic templates in line with service guidelines providing communicate with other agencies including GP's and community nursing staff via EMIS to keep them fully informed about ongoing patient management.
16. To play an active role in discharge planning of new adult home feeders, including a pre-discharge ward visit to ensure a patient focused seamless service. To be responsible for arranging feed, equipment and training for adult tube fed patients transferring into the local area from other hospitals.
17. To promptly respond to telephone enquiries from patients and staff to support ongoing dietary management.
18. To be responsible for safe use and tracking of equipment in your care including scales, calipers and feeding pumps. To provide specialist advice to patients, carers, community health care professionals and consultant on enteral feeding equipment, including monitoring lifespan and direct referral to organise replacement of enteral feeding tubes.
19. To regularly assess patient enteral feeding tubes and provide specialised advice and treatment where necessary, liaising with GP's regarding the prescribed treatment.
20. At times of increased service demands or reduced staffing levels to contribute to providing cover to other clinical areas.

PROFESSIONAL

1. To initiate, plan, deliver and evaluate formal and informal training to other health care professionals and staff groups, to include community healthcare staff.
2. To promote the department Clinical Governance agenda by initiating and contributing to research and audit projects
3. To contribute to the identification, development and review of service clinical guidelines and comment on matters relating to nutrition and dietetics to ensure evidence based practice including national guidance is applied.
4. To develop specialist education resources which have a clear evidence base and which are acceptable to users of the service.
5. To share evidence on enteral nutrition which informs practice for colleagues, to improve the outcome for the patient.
6. To be responsible for own CPD, to maintain and further develop knowledge and skills to enhance professional practice, actively participating in the Trust appraisal system.
7. To promptly input clinical activity data into the department electronic system .
8. To comply with Trust and department policies and clinical guidelines.

LEADERSHIP:

1. To supervise and provide clinical support to the dietetic assistant, through caseload supervision, development and monitoring of competencies and providing guidance on audit projects.

2. To contribute to the training of pre-registration student dietitians, including programme design, assessment methods and tools and by delivering designated training weeks within the planned programme. This includes retaining the full responsibility for the clinical caseload and providing supervision of designated project work/case studies.
3. To provide timely verbal and documentary evidence of student progress to both the student and the clinical Lead for Dietetics
4. To contribute to the training of post-registration student dietitians, including supervision of research projects and fostering links with Chester College.

This list of duties is not intended to be exhaustive, but indicates the main areas of work and may be subject to change after consultation with the post-holder to meet the changing needs of the service

All staff at MCHFT have a responsibility to:

- Maintain active registration status
- Always act in accordance with professional Codes of Conduct and guiding documents
- Where applicable, always act in accordance with the Code of Conduct for NHS Managers,
- Maintain up to date skills and knowledge
- Maintain an awareness of patient led service issues
- Maintain a professional/personal portfolio
- Adhere to all Trust policy, procedures and guidelines.
- Adhere to Trust standards of behaviour and expected performance
- Comply with Infection Prevention and Control (IP&C) policies and procedures as appropriate to their role and responsibilities in their individual work setting. Staff are required to be personally accountable for their actions and be responsible for their own compliance in relation to IP&C policies, protocols or advice.
- Ensure they work in accordance with local procedures and report any issues which they consider to be a risk to the health and safety of themselves and/or others.
- Act in accordance with the Trusts values and behaviours
- Where applicable to participate in and provide data on the efficacy of treatment and specialties

Mid Cheshire Hospitals NHS Foundation Trust is looking to ensure that we provide equity of services across seven days of the week. This post may be reviewed in line with this plan and in some cases an element of weekend working may be required

